

& Oconto City Dock Colony (8-years)

Martin Fest 2025

Dick Nikolai & Cordula Van Den Heuvel



Oconto Purple Martin Colonies comprise of several sites across the city proper totaling several types of housing comprised of two Lonestar Alamo houses (Aluminum) at City Park on two poles and at City Dock one pole with two reconstructed Trio Wade houses (Aluminum) with four plastic gourds comprising of three Super Gourds and one Troyer Vertical gourd hanging below on a pole through the 2024 nesting season. The City Park site was started in **2015** while Oconto was one of the many of [Wisconsin's Bird Cities](#) started in (**2012**). The first purple martin housing placement at City Park was comprised of a single unit [Trio Wade \(Nature House\)](#) now Erva which had ten pairs (total cavities 12 of 6" X 6" X 6") of martins in the first season. In 2016, two houses called "16 Family Purple Martin Barn" (Figure A) from [S & K Manufacturing Inc](#) were placed in the spring by the Oconto Park's Department, which were quickly occupied by 14 pairs of purple martins that laid 54 eggs. During 2017, the S & K houses were replaced with a grant from the "[Songbird Essentials Buy One-Get One Grant Program](#)" when two Lonestar Alamo houses were erected (**Figure B**). The 2017 season at City Park yielded ten pairs that laid 52 eggs, hatched 43 young, and fledged 39 young.



Figure A: S & K (*16 Family Purple Martin Barn*) made of plastic comprising of three colors with green for trim and the roof of the house, ends were of red, and door openings were white. Two cavities were located on each end (6" X 9") with six cavities on the front and back (6" X 6") totaling 16. For maintenance, the roof needed to be pried open with the fronts of each story of three cavities operating as a single door.

In 2018 at City Park, there were 11 pairs that fledged 51 young. In addition, a new housing complex (**Figure C**) was placed within the city of Oconto at a place called City Dock. This was a reconstructed set of Trio Wade housing made originally by Nature House Inc which was sold to Erva. Housing is aluminum with reconstruction placing three stories high on two sets of housing with three Super Gourds and a Troyer Vertical gourd suspended below that were gifted to Oconto and placed on a square pole. Here 4 pairs of martins nested at this new site and fledged 17 young.

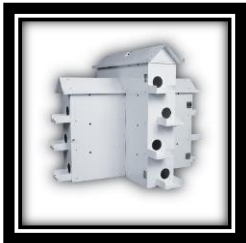


Figure B: Songbird Essentials housing called *Lonestar Alamo house* was comprised of aluminum with crescent openings. This type of housing was readily accepted after placement. Each section was one door for opening with three or four cavities. House was all white.



Figure C: Trio Wade (left) housing placed in 2015 at City Park & in 2018 at City Dock with gourds.



Figure G: Troyer Gourd Rack (Ultimate-Deluxe K-18 TVGC & Pole) with ground stake donated in 2025.

In 2019, Oconto City Park had seven pairs fledged 33 young and at City Dock another 13 pairs fledging 56 young. High water at City Park began rising during 2018 through 2021 affecting the housing stability. Note **Figure D** showing the unstable soil and wave actions impacting the base along the high-water line.



Figures D, E & F from left to right: In 2019 at City Park the shoreline edge was eaten away where one house went down in mid-May while the second house & pole was ripped and dangerously threatened. Martins had already arrived and we chose to place the house beyond the large rocks as seen in the third photo on the left. In fall 2019, the second house on Figure E was moved to the location seen in Figure F to the right of where both exist at the present. Fortunately, only one adult was lost even though some eggs were destroyed.

Nesting season during 2020 provided stable high-water levels at City Park carrying through 2023 was a gift when shoreline levels started to go down. In 2024 water levels have come down more with the hope for 2025 to have low levels not impacting any housing. New housing to be placed is housing donated by [Troyer Gourds](#) (Figure G) with its current demonstration site for Martin Fest 2025 at City Park then its permanent placement at City Dock thereafter.

2015 City Park:	Pairs- 10	Eggs- UNK	Hatch- UNK	Fledge- UNK
2016 City Park:	Pairs- 14	Eggs- 54	Hatch- UNK	Fledge- 34
2017 City Park:	Pairs- 10	Eggs- 52	Hatch- 43	Fledge- 39
2018 City Park:	Pairs- 11	Eggs- UNK	Hatch- UNK	Fledge- 51
2018 City Dock:	Pairs- 4	Eggs- UNK	Hatch- UNK	Fledge- 17
2019 City Park:	Pairs- 7	Eggs- UNK	Hatch- UNK	Fledge- 33
2019 City Dock:	Pairs- 13	Eggs- UNK	Hatch- UNK	Fledge- 56
2020 City Park:	Pairs- 12	Eggs- 67	Hatch- 52	Fledge- 51
2020 City Dock:	Pairs- 20	Eggs- 114	Hatch- 96	Fledge- 90
2021 City Park:	Pairs- 24	Eggs- 67	Hatch- 43	Fledge- 39
2021 City Dock:	Pairs- 22	Eggs- 118	Hatch- 86	Fledge- 66
2022 City Park:	Pairs- 25	Eggs- 97	Hatch- 73	Fledge- 70
2022 City Dock:	Pairs- 21	Eggs- 132	Hatch- 75	Fledge- 73
2023 City Park:	Pairs- 18	Eggs- 88	Hatch- 80	Fledge- 78
2023 City Dock:	Pairs- 22	Eggs- 111	Hatch- 93	Fledge- 86
2024 City Park:	Pairs- 23	Eggs- 102	Hatch- 100	Fledge- 86
2024 City Dock:	Pairs- 19	Eggs- 98	Hatch- 96	Fledge- 77