

# Purple Martin Chatter

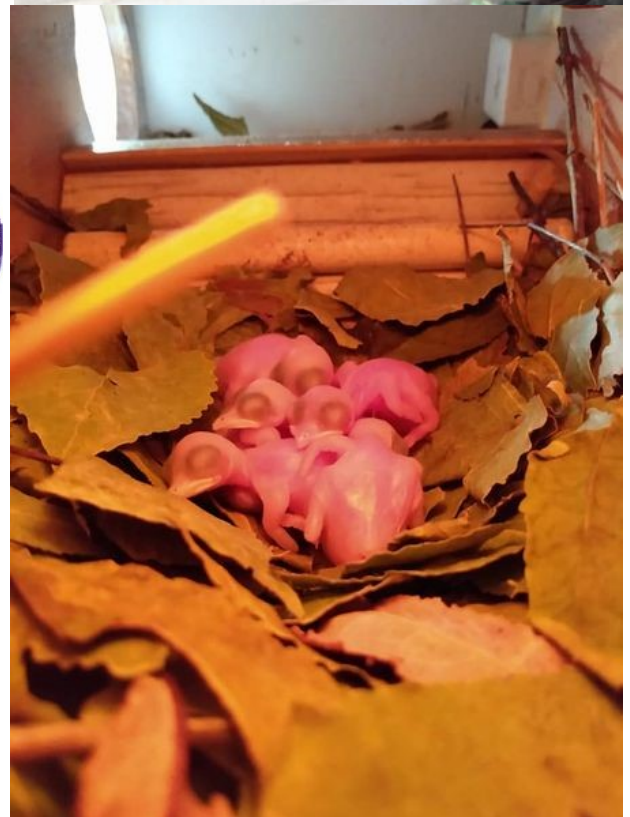
A Publication of the Wisconsin Purple Martin Association

Summer 2021



## Inside This Issue:

- Presidents Message
- Nest Change Tutorial  
by Greg Zimmermann
- Bird Rehab Story
- Artificial Light Affecting Migration Timing
- It's a Trap by Les Rhines
- Open House
- And More



## *A Message from the President:*



**Greetings everyone,** It's Purple Martin Time! I was going through some old files recently and came across an old button that said "It's Purple Martin Time" It brought back memories of when my wife Mary and I traveled to a little town called Finger, Tennessee twenty years ago. Victor Stoll's farm, located just outside of this little town, was the site of the national purple martin festival. Mary and I spent a couple of days at the festival in the heat, talking with other landlords and experts about purple martins, Victor's colony was huge, his best guess was that he had over 660 pairs of birds that season, I need to mention that most of the housing at the colony were large fixed multiple compartment structures that could not be raised or lowered. Still the highlight for all was at the end of each day, watching and waiting for these massive flocks of birds to return from feeding, at some points the sky becoming dark with martins, quite a site, and surely one to remember.

Well, fast forward to 2021 and it's Purple Martin time again here in Wisconsin. Martins have arrived and continue to arrive, although the migration has slowed, but occurring at the same time we have birds pairing up, building nests, laying eggs, and at some colonies, hatching has already begun. June is that special month. This would also be the month for our own Martin-fest. Unfortunately, we chose to cancel again this year, but we promise will be back next year, I do ask that you mark your calendar for June 25, 2022. Marsh Haven Nature Center located in Waupun Wisconsin will be the host site for the event; special note, the WPMA will be celebrating 10 years as an organization dedicated to the preservation of purple martins in Wisconsin.

Now to this issue, there's a lot to cover; to begin with we have a new email address, [purple-martinchat@gmail.com](mailto:purple-martinchat@gmail.com), at some point in the future we would like to transition all future official WPMA mailings to come from this address. Next our vice-president Greg Zimmermann will share some information on performing nest replacements in his message. Also we are publishing the recently approved By-Laws and Board of Directors Job Description as well as the minutes of the most recent BOD meeting.

You will find a link to a very interesting article from the Audubon organization about the theory that artificial lighting may be having an effect on the migration schedule of Purple Martins and other migrating species. <https://ecfsapi.fcc.gov/file/6520212189.pdf> Very interesting,

Later in this issue there is a brief article from Board member Larry Lienau about his recent experience with an injured martin and the actions that were taken to rehab the injured bird.

There is still more that I have not mentioned, but I think you will be able to discover that for yourself as you continue, so, I invite you to grab that beverage of choice and sit back and enjoy this summer issue of the Purple Martin Chatter. Also, feel free to share this with friends.

A handwritten signature in cursive script that reads "Leo Rhines". The signature is written in dark ink on a light-colored background.

### ***A tutorial from the Vice president on Nest changes:***

Controlling nest parasites by doing nest replacements can dramatically improve your nestlings' health and chances of survival, both before and after they fledge. Tests conducted by the PMCA in the late 1980's showed that only 44% of martin nestlings in parasite-infested nests survived to fledging age, compared to 84% , but today, nest replacement is the preferred method of control. With the advent of a totally-safe method of controlling parasites, it doesn't make sense to use illegal and potentially-harmful pesticides. (Ideally, nests should also be changed after long, heavy, wind-driven rains since rain-soaked nests can cause nestlings to die of hypothermia or chilling.) Unfortunately, most people balk at the thought of replacing a martin nest, they're afraid of "messing something up," or disturbing the martins. Some landlords believe that touching baby birds will cause their parents to abandon them this "old wives tale" is untrue. Most birds have little or no sense of smell, and by the time martins have built nests, laid eggs, and hatched young, they've invested an enormous amount of time and energy in their reproductive effort and will not be discouraged when they witness humans handling their young. Thousands of nest changes are conducted every year by conscientious Purple Martin landlords and bluebird trail operators without a single reported case of nest abandonment.

What is a nest replacement? It's when a landlord removes a parasite-infested nest from a martin compartment or gourd while the young are still living in it and replaces it with a bed of clean, dry material. By the time nestlings are about 10 days old, the typical martin nest is crawling with a variety of insects and arachnids that weaken and sometimes kill the martin nestlings. These nest-dwelling parasites include martin fleas, nest mites, blowflies, and bedbugs, all of which are harmless to humans, but can be deadly to the nestlings. Blowflies are especially common in the northern part of the martins' range, and are perhaps the most harmful of these parasites. The adult blowfly, which resembles a common housefly, lays her eggs in the nest material when the martin nestlings hatch. Once the blowfly eggs hatch, the larvae (or maggots) hide in the bottom of the nest during the day, then attach themselves to the nestlings at night and take blood meals (i.e., suck their blood). It's not uncommon to find 200-500 of these maggots in a single martin nest To do nest replacements, you'll need a bag of replacement nesting material (such as wood shavings or soft, dry pine needles), a 5-gallon bucket to temporarily hold the nestlings, a putty knife or similar instrument to scrape out nest debris, and a container for the old material you remove. A bottle of rubbing alcohol and a rag should also be on hand for wiping down the interiors of mite-infested cavities, as well as cleaning your hands between replacements. Although martin parasites are not harmful to humans, nest mites and feather lice can crawl onto you and be annoying, plus there is a considerable amount of dust and debris that is kicked up when doing nest replacements. Therefore, if you have a large number of nests to replace, you might consider wearing long sleeves and pants, a dust mask, and eye protection. First, remove and inspect the young. Pull



off and discard any blowfly larvae that are attached to the bird. Place the nestlings into a bucket already lined with a few inches of fresh nesting material. Take a good look at the nest. Observe where the nest bowl is located and how deep it is. Next, remove all of the nest material from the compartment to insure removal of all blowfly larvae etc. If the housing is heavily infested with nest mites, quickly wipe down interior and exterior surfaces with a rag and rubbing alcohol as long as you remove most of the nest material, you will have removed most of the parasites. Insert a handful or two of fresh, dry nesting material (either wood shavings or soft pine needles) into the cavity and gently place the young birds back into their proper compartment. Repeat the procedure for each nest to be replaced. You may find that some active nest cavities contain very little if any nesting material this is not unusual for inexperienced birds. Insert the same amount of nesting material as you would for all other nests. Never attempt to replace more than one nest at a time or you risk mixing up nestlings. Move as quietly and as quickly as possible, especially when there are a large number of nests to replace, in which case you might consider staggering your replacements every other day. I added a few pictures showing some of the procedures as describe in my writing. Good luck and remember a healthy bird is a happy bird.

**Greg**



James R. Hill, III

**Fig. 1.** An extreme example of blowfly parasitism on a 6-day-old nestling Purple Martin. This nestling's siblings had died, apparently of blowfly parasitism, forcing every maggot in the nest to be dependent on just a single host individual for their continued nourishment. Many maggots had fallen off before this photo was taken in Pennsylvania. This photo strongly emphasizes the need for landlord vigilance and the occasional need for nest changes before nestlings reach 10 days of age.



James R. Hill, III

**Fig. 3.** A deep, 5-gallon bucket is recommended so that older (i.e., 20-day-old) nestlings won't be able to flutter up and out to escape while the landlord is cleaning and refurbishing their nest cavity. To keep the bucket clean, wait until each nestling "poops" before placing it in the bucket (they do this instinctively when handled). Change the material in the bucket often to avoid spreading disease.



**Fig. 7.** Once you've added the clean nesting material to a cavity or nest tray that you've just cleaned out, and fashioned a nest bowl in it, replace the nestlings into the nest bowl, huddle them in a group (if they are featherless), so they can help keep each other warm.

## ***Bird Rehab Experience—Board Member Larry Lienau***

When I woke up Tuesday morning, May 25<sup>th</sup>, I looked out the window (as I always do) to see a Martin fluttering on the ground around the pole. He appeared to be injured. When I was able to pick him up, he was wet, probably from the morning dew. It was a SY male. His wing seemed to be either dislocated or broken. I kept him in a box and fed him scrambled eggs and meal worms. Other than the wing issue, he appeared to be healthy. After checking with other WPMA members, I contacted Wildlife of Wisconsin (W.O.W.). So, on Friday, my wife and I drove to Manitowoc to meet up with a member of W.O.W. who took the bird to their rehab place where a vet would look at it to determine whether the wing could be fixed or if the bird should be euthanized.

After waiting about a week we contacted W.O.W to see how the bird was responding to learn that the news was not good. The bird was eating when fed by hand, but wouldn't eat much from a dish. At least, not enough to sustain it. W.O.W. tried another facility to see if they could take it, but, unless it ate on it's own, they would not. So unfortunately the martin was euthanized.

**Editors Note:** In light of this we thought it appropriate to provide this link from the Wisconsin DNR that lists the wildlife rehab facilities available in the state.

<https://prodoasext.dnr.wi.gov/reports/rwservlet?whdb&report=rehabdir.rdf>

Also at the suggestion of Larry and Vice President Greg Zimmermann the WPMA made a donation of \$50.00 to Wildlife of Wisconsin.

\*\*\*\*\*

***Insects above us!*** Follow this link to view a short YouTube video that explains how flying insects travel in the air above us called "The Invisible Highway".

<https://www.youtube.com/watch?v=xvCsYOH3Nt8>

\*\*\*\*\*

***Correction:*** In the Fall issue of the Purple Martin Chatter we pictured what we believed to be a Red Tailed Hawk, actually, we have been informed that it is a Red Shouldered Hawk. Our apologies to the hawk.

\*\*\*\*\*

***Open House and Bird Banding:*** Board Member Larry Lienau is hosting an Open House at his personal Purple Martin colony on Saturday July 10, 2021 from 1:00 to 4:00 PM. Joining Larry for this event will be Master Bird Bander Dick Nikolai and other Wisconsin Purple Martin Association board members. During the event Dick will be actively banding the young at the colony and board members will be available to answer questions. Larry's colony is located at W1757 Garton Road, Sheboygan, Wisconsin. See you there.





# It's a Trap!!

By Les Rhines

I'll come right to the point, I don't like Sparrows. Sparrows have no place in a martin colony; I won't go into what this little avian devil can do, that's been documented many times over. What I'm going to attempt in this article is to outline some of the most popular methods of getting rid of sparrows and that is primarily through trapping. I do want to say up front, do not wait until you have a problem, rather, never invite them into your yard to begin with. By that I mean, if you feed song birds at your yard, only offer good quality songbird mix. Sparrows like millet and cracked corn, and if that's in your seed mix, your just ringing the dinner bell.

I will also admit, although I have a little bit of experience at trapping these winged devils, they have at times made to look like a fool. Trapping will take patience, and an arsenal of traps. There are entrance traps, nest compartment traps, food traps, nest box traps, and of course, not a trap at all but a pellet gun.

## **Entrance Traps:**

**Tunnel Trap** - This is a trap that is used with Troyer tunnels. The tunnels can be attached to vertical or horizontal gourds or purchased with a collar and attached to a wood house. The setup is simple, leave



the sparrow nest in place, install the trip shaft from the inside so that a short stub extends out of the front, next place the gate over the top of the tunnel, (picture two). The trap is sprung when the sparrow enters and pushes the trip shaft causing the gate to close trapping the bird inside. To remove the bird place a clear plastic bag over the collar and raise the gate, typically the bird will see daylight and fly out into the bag. Or in the case of a gourd enclose the gourd in a large plastic bag and open the access cover.

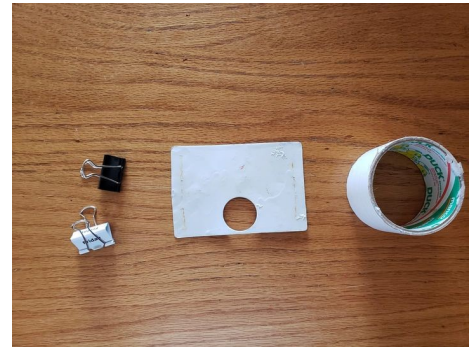
**Bob Buskus Bingo Trap:** - This trap isn't too professional looking, but it sure works good to trap house Sparrows that have already built their nest in the Martin house that are using entrance plates instead of tunnels. The benefit is that like the tunnel trap you can leave the sparrow nest in place, the Sparrow suspects nothing. All you do is clean out the area in front of the perch on the nest tray, and set the trap in place. Then close the compartment door. The Sparrow goes about his or her normal life not expecting anything when they enter the cavity, and. In



the words of Bob Buskus, **\*BINGO\*** you got em! I have made a few of these and used them successfully, I've even used them if I had tunnel entrances. One thing that I do and recommend, is that you use a reducer plate to cover

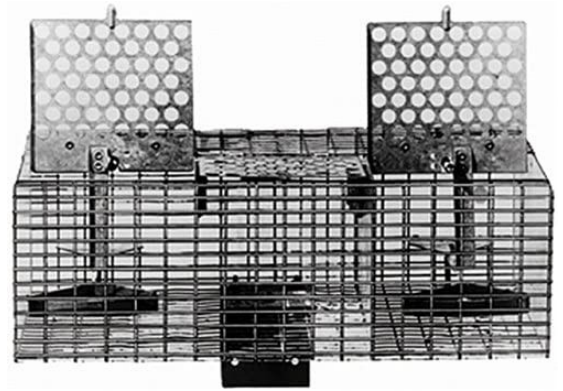
the starling resistant entrance. I make mine out of 1/8 inch sign material or cut them out of white aluminum house soffit coil stock, keeping the hole diameter no larger than 1 and 1/4 inch. Sparrows can enter but too small for martins.

**The sparrow reducer:** As I mentioned, they can be made out of sign board material or thin aluminum. I use the sign-board material most often and secure it with white tape. The idea is that you want to make it blend in with the house, sparrows are quite observant. I use the thin aluminum reducer on the Troyer tunnels, just make sure that the gate slides over the reducer so the traps operates correctly. You could also use clamps to hold the reducer in place, just paint them white allowing them to blend in with the entrance.



### **Bait Traps:**

**ST1—Trio Sparrow Trap:** This trap is designed to catch sparrows using a variety of baits, seed, white bread and even feathers. It can be used as is, right out of the box, but, I would recommend a few adjustments. I place mine on a post about 5 feet high within the martin colony and I keep it covered with a black plastic garbage bag until I see a sparrow at my colony. I have found that if I leave it uncovered all of the time, I will catch finches and even morning doves. (hard to believe that a dove will fit in the cage, but it happens). Modification 1, I attach a small tray to the top of the trap for the purpose of placing seed, like millet and cracked corn. Next I remove the 2 small seed cups located under the trip hoops and replace them with larger shallow containers, yogurt containers are a simple choice. The operation is simple, bait it, open the two doors as the picture shows and it is ready to go. When a bird is caught the door/lid will close and the bird will be trapped, however, they will quickly find a one way access hole allowing them to enter the center section. At that point you can reopen the door/lid arming the trap again. The idea is that a trapped sparrow will call in other sparrows. This procedure is advised especially if the first bird caught is a female. Many landlords wear a light pair of gloves before extracting the unwanted bird from the trap. It is also possible to place a large plastic bag over the trap and open the door, thus catching the unwanted bird in the plastic bag. If however, a native songbird is caught, simply open the door/lid allowing it to escape.



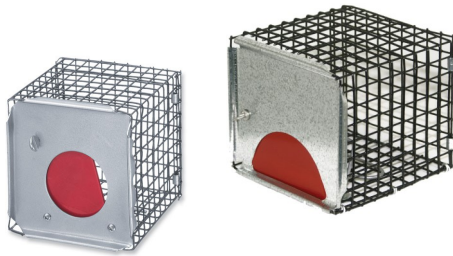
**Elevator/Repeating Trap:** This is another type of food or bait trap that is typically used in a situation where the landlord has many sparrows at his/her colony and other traps are ineffective. The operating principles are simple, bait is placed on the top platform and inside the caged area. The investigating sparrow lands on the hoops and begins to feed, they see additional seed inside the trap and attempt to reach it, however they fall into the larger cage through a one way gate. Once there they continue to call other birds. This trap requires additional food and water to hold a larger volume of birds.





### ***Nest Compartment Traps:***

***Universal Sparrow trap:*** These two style traps are available from the PMCA, their overall dimensions are approximately 4 1/2 , by 4 1/2 by 5 1/2 inch.

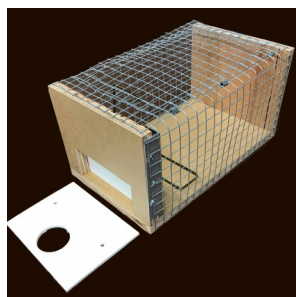


The two entrance styles allow for use with a round hole and with a starling resistant entrance. Personally, I have owned the trap on the left for 15 years and have caught very few sparrows until I made some modifications. Most notably, I painted the trap black except the red gate/door. I also cut 5 pieces of aluminum trim and painted it black. I then attached

those aluminum pieces to the inside of the trap using small electrical wire ties.

The idea is to have the trap completely dark when it is placed inside house. I do not place any material inside the trap. Note: I have even caught starlings in this trap after making these changes, hard to believe that a starling would enter such a small compartment. I use this trap usually in the very early spring before martins arrive, because sparrows are already starting to look for nesting sites. I open one compartment on one of my houses and set the trap. Better to eliminate the problem early.

***Nest Compartment Traps:*** These traps differ from the Universal traps above, primarily because of there size; these traps fit inside the entire compartment of the martin housing. Traps like these are only available from a few vendors like the PMCA and Troyers'. Because of that many landlords make their own. These traps are most effectively at the earliest sign that a sparrow is interested in a particular compartment. Before the sparrow has a chance to build a complete nest, lower the house and pull out the nest tray and substitute the trap. It may be necessary to add some nest material inside the trap that it looks similar to what the sparrow had started. Be sure to place a reducer over the entrance to only allow sparrows to enter. As a preventative measure some landlords will always keep a trap in a particular compartment with a reducer, especially if they find that sparrows tend to build in a particular compartment. Another strategy is if during a nest check you find that the sparrows built a nest and have also produced eggs, you can still use this trap. Take out the nest and transfer the eggs to the trap with some of the nesting material and set it back in the compartment. You will likely catch the female in a short time, but the male will elude you. Once you have caught and dispatched the female, reset the trap and you may catch the male. Remember, sparrows become trap aware very quickly, when they notice a change, they abandon the compartment and move to another, further frustrating the landlord.



This trap is available at Northern Sky's Purple martin Colony



This trap is available at the PMCA or Troyer's Bird Paradise

As I mentioned many martin landlords produce their own traps. These four photo's show one of the compartment traps that I have built and use in a T14 or T10. This trap uses a sliding gate to trap the sparrow which is different from the universal trap that utilizes a hinged door mechanism. While both methods work, the problem that has troubled trap builders is to construct the trap that can be easily tripped when the sparrow enters, but, not too light that it trips while the house is being raised up on the pole. Fine tuning a trap takes some effort, and patience. In the photo's below, I show the inside workings of the trap as well as a means of extracting the birds. I usually place the entire trap into a large clear garbage bag and then open the release door.



### ***Gourd Traps:***

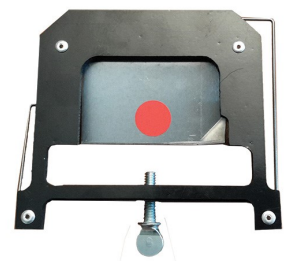
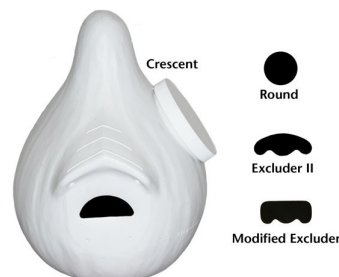
#### ***Super Gourd:***

So far I've talked primarily about traps that can be used in wood or aluminum houses. However, there is the other realm of housing used by many landlords and that is gourds. Earlier I did mention the Tunnel trap, these traps can be used on Troyer vertical and horizontal gourds because the Tunnel entrances have been designed to easily accept the tunnel trap. Other manufactured gourds require other traps, so in this portion of the article I will provide some insight into these other manufactured gourds. First, let's talk about the **SuperGourd**. A trap is available for this gourd from Troyer's or from the PMCA. The trap is inserted through the access hole and is snapped into place by clips in the entrance hole.



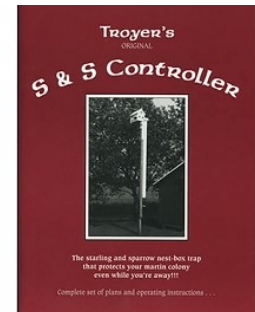
#### ***Excluder Gourd:***

The trap that is available for the Excluder gourd will work with starling-resistant entrances, it has an easy to use shutter mechanism that slips over the inside porch. This trap is available from the PMCA.



## Repeating/Elevator Traps:

**S & S Controller:** This is a trap that is designed and sold by Troyer's Bird Paradise. The benefits of this trap are that it will automatically reset, It allows the landlord to release a native bird unharmed, it has a wire cage that is visible from a distance so you can see what is trapped, it does not require bait, and it will work great in reducing European Starlings and House Sparrows. Plans are also available if you choose to build one yourself. This trap resembles an actual martin house so you want to place it away from the colony near a building or near trees; somewhere where martins are not inclined to go, but within sight of the colony. The theory is that when a starling is investigating your martin housing, they see this trap with the large 2 inch opening and they can't resist. The trap uses a counter weight system that once setup can catch Starlings and Sparrows easily.



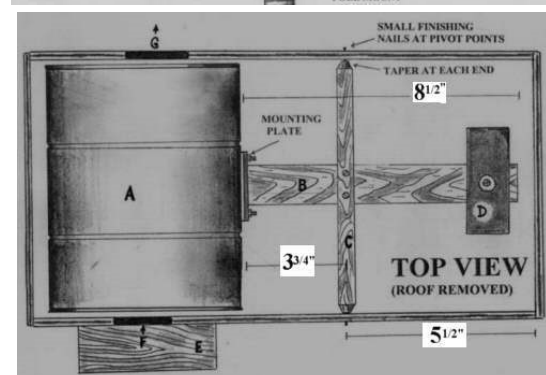
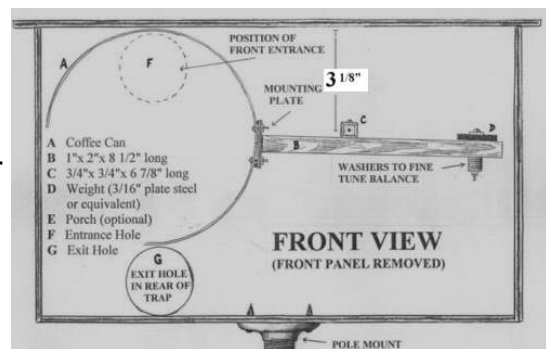
## NB Compact Trap:



This trap is a smaller version of the S & S Controller, it uses a counter weight system just like the Controller, except it is much smaller. I have provide a

link to the plans from the PMCA. I included some pictures showing how the trap is constructed. This is the version I have at my colony.

<https://www.purplemartin.org/uploads/media/nbcompacttrap-499.pdf>





## Summary:

Again let me say that I don't consider myself an expert on catching sparrows, rather, I consider myself a life long learner in that category. But I do want to close with just a few others things. First never leave traps unattended, monitor them frequently, especially if you choose not to use a sparrow reducer. Second, begin trapping early and don't wait until you have a problem, have traps ready to deploy when sparrows arrive. Most new landlords believe that sparrows will only be a problem in the beginning of each season, not true. Sparrows, can and will have multiple nests throughout the season, so it is very likely that sparrows will invade a colony even after martins arrive. That is why at my colony I have a system of traps; nest box traps and repeating traps for the very early season, and entry traps and bait traps for after the martins arrive.

I know that many of you out there will have much more to add to this, so feel free to share your thoughts .

Les



Troyer's Birds' Paradise [https://www.purplemartinproducts.com/Troyers-Birds-Paradise\\_bymfg\\_1-0-1.html](https://www.purplemartinproducts.com/Troyers-Birds-Paradise_bymfg_1-0-1.html)

Northern Sky's Purple Martin Colony <https://northernskys.ca/>

PMCA <https://www.purplemartin.org/>



# BY-LAWS Of The WISCONSIN PURPLE MARTIN ASSOCIATION

Adopted 06/01/2021

## Article I Membership

**Section 1: *Definition of Membership.*** Any person or organization interested in the purposes and objectives of the Wisconsin Purple Martin Association (WPMA) is eligible for membership.

**Section 2: *Classes and Benefits of Annual Membership.*** The membership classes shall be determined by the Board of Directors and published in the WPMA *The Purple Martin Chatter* Newsletter.

Members are entitled to receive the WPMA *The Purple Martin Chatter* Newsletter.

**Section 3: *Dues.*** Membership dues shall be payable yearly. The Board of Directors, by a majority vote at any regular or special meeting, shall establish the annual membership dues.

**Section 4: *Renewals.*** Membership dues can be renewed anytime during the calendar year.

## Article II Board of Directors

**Section 1. *Number, Election, Term and Removal.*** The number of Directors shall not be less than five (5). Directors are initially elected to the Board for a one-year term, and subsequently elected to the Board for a three-year term by the existing Board of Directors. Any Director may be removed with or without cause by the vote of a majority of the Board of Directors. A Director may resign in good standing for any reason at any time. There will be no restrictions to the number of terms served.

**Section 2. *Vacancies.*** In case of any vacancy in the Board of Directors, a successor to fill the unexpired portion of the term may be elected by a majority of the Board of Directors.

**Section 3. *Powers and Duties.*** The Board of Directors shall have full power to manage and control the affairs and property of the Association, and to adopt rules and regulations governing the action of the Board.

**Section 4. *Meetings.*** Regular meetings of the Board of Directors shall be held at such time and place or electronically as may be determined by the Board. Special meetings of the Board may be held at any time and place upon the call of the President, or any three Directors. Board members may participate in any meeting by electronic means. All official meetings will be recorded and archived by the Board Secretary or designee.

**Section 5. *Quorum.*** Fifty percent (50%) of the Directors in office shall constitute a quorum for the transaction of business and this may include Board members participating electronically.

**Section 6. *Committees.*** The President or the Board may create other committees they deem necessary, and define their powers and duties, to assist the Association in carrying out its responsibilities.

The Finance Committee is a standing committee composed of the Treasurer who shall serve as its chair and consists of at least one additional Board member. Responsibilities include developing, reviewing and monitoring the annual budget, ensure for an annual audit, and report the financial status to the board.

## Article III Officers

**Section 1. *Positions.*** The Officers of WPMA shall be President,

Vice-President, Secretary and Treasurer. One person may hold more than one office in the Corporation, except that the President cannot hold the office of Treasurer.

**Section 2. *Term of Office.*** Officers will hold office for a 3 (three) year term. There will be no restrictions on the number of terms served.

**Section 3. *Removal.*** Any officer of the Association may be removed by a majority of the Directors in office.

**Section 4. *Vacancies.*** In case of any vacancy of any office, a successor to the unexpired term may be elected by the Board of Directors at a regular, annual or special meeting.

**Section 5. *President's Powers and Duties.*** The President shall preside at all meetings of the Board of Directors. The President shall be responsible for the general supervision of the affairs of the Association, and shall keep the Board of Directors informed, and shall freely consult with them concerning the activities of the Association. The President is ex-officio member of all committees and serves as the De Facto Executive Director of the WPMA.

**Section 6. *Vice-President's Powers and Duties.*** The Vice-President shall have such powers and duties assigned to them by the Board of Directors or the President. In the absence of the President, the Vice-President shall assume the duties of the President.

**Section 7. *Secretary's Powers and Duties.*** The Secretary (aka Secretary of the Association) shall record and archive the minutes of all Board meetings and provide copies to the members of the Board. The Secretary shall perform such other duties as assigned by the Board President or the Board of Directors.

**Section 8. *Treasurer's Powers and Duties.*** The Treasurer shall have custody of all funds and securities of the Association. The Treasurer shall keep, or cause to be kept, full and accurate accounts of the receipts and disbursements of the Association and shall require deposit of all monies and other valuable effects of the Association in the name and to the credit of the Association in such banks or depositories as the Board of Directors may designate. Whenever required by the Board of Directors or any Board Officer, the Treasurer shall render a statement of accounts and exhibit the Association's books.

## Article IV. Contracts, Checks, Bank Accounts, and Investments, Etc.

The President and Treasurer shall be authorized on the Association's behalf to sign financial bills, notes, receipts, acceptances, endorsements, checks, releases, contracts and documents. The Board of Directors shall determine who besides the President and Treasurer may act on the Association's financial behalf.

## Article V Office and Records

**Section 1. *Office.*** The office of the Association shall be located at such place as determined by the Board of Directors.

**Section 2. *Records.*** These shall be kept by the Secretary of the Association which include these By-Laws, and all minutes of the meetings of the Board of Directors pursuant to Section 181-72, Wisconsin Statutes. All Board decisions made via email shall be placed into the minutes of the next scheduled Board of Directors Meeting. Records need to be retained electronically from email decisions until published into the minutes.

## Article VI Parliamentary Authority

In procedural matters not covered by these By-Laws, Robert's Rules of Order shall be used



## Article VII Fiscal Year

The fiscal year of the Association shall begin on January 1 of each calendar year and shall end on December 31 of the calendar year.

## Article VIII Amendments

These By-Laws may be amended by the affirmative vote of five members of the Board of Directors in attendance at any meeting of the Board of Directors or with a simple majority if the vote is conducted by email.

## Article IX Dissolution of the Association

**Section 1. *Dissolution.*** The Board of Directors of the WPMA may vote to terminate the organization at any meeting by a two-thirds majority of the Board of Directors.

**Section 2. *Dispersal of Finances.*** Upon the dissolution of the WPMA, the Board of Directors shall, after paying or after making provisions for the payment of all liabilities of WPMA, dispense all treasury funds to The Wisconsin Society of Ornithology in their Purple Martin account or to BRAW which takes care of cavity nesters including Purple Martins.

These By-Laws shall be subject to the laws of the State of Wisconsin. This document was approved and became effective by the WPMA Board of Directors on 06/01/2021

# Wisconsin Purple Martin Association

## Board of Director Description

Adopted 06/01/2021.

**Title:** Board of Director Member

**Objective:** Provide Leadership in successfully accomplishing the goals and objectives of the organization

**Term:** New members serve a one-year introductory term. Subsequently, Board members serve a three-year term.

**Meetings:** The Board of Directors meet four or more times a year. Meetings may be conducted in person, by Zoom or both.

### **Responsibilities:**

-> Establish operating and organizational policies

-> Participate to help meet strategic planning goals

-> Assure compliance with the by-Laws, articles of and all local, state and federal laws.

-> Board of Director Officers follow the additional requirements as stated by the by-laws.

## **WPMA BOD Meeting Minutes**

April 18, 2021, 2:00 p.m. at Ledgeview Nature Center

Attending: Les Rhines, Greg Zimmermann, Deb Zimmermann, Dick Nikolai, Larry Lienau

Treasurers Report:

Checking \$455.17

Savings \$1,761.86

Discussion topic: Increase the size of the board.

It was agreed that we need to increase the size of the board as members that have left have not been replaced. Decision made to advertise in next (June) newsletter for nominations.

Discussion topic: Job Description and By-Laws:

A copy of the Bluebird Restoration of Wisconsin (BRAW) Job Description for board members and By-Laws were distributed and discussed, it was agreed that the WPMA should adopt a similar set. Deb and Les will meet and review and modify the BRAW documents to meet the needs of the WPMA and send them out to the board for approval with the minutes of the meeting. When approved these new documents will be published in the June newsletter.

Discussion on meeting dates and times:

It was agreed that the WPMA board should meet 4 times each year, at a place that is central to the board, Stevens Point was identified as a possibility. If board members cannot travel, then attendance electronically is supported (Zoom). Meeting dates are not firm yet, but a summer (June) BOD meeting could be scheduled the evening prior to Martinfest. A summer meeting date for 2021 has not yet been set. The fall BOD meeting has been set for Saturday September 11, at 2:00 p.m. at Ledgeview Nature Center. A date for a December meeting/ Christmas party had been discussed without a decision. It was determined that Saturday was preferred over Sunday for future meetings. Dates for future BOD meetings would be published in the newsletter when available. BOD minutes would also be published in the newsletters.

Future locations for Martinfest:

It was decided that we would begin looking for a host site for Martinfest 2023 by publishing a request in the June Newsletter asking for recommendations.

Martinfest 2022, will be the 10<sup>th</sup> anniversary of the WPMA.

Martin walks:

Members are interested in sponsoring a Martin walk for local martin landlords, it was suggested that each walk coincide with these phases: early nesting, hatching, and mid-season young, including nest



## ***BOD Meeting Minutes Cont'd***

changes. These walks could be promoted in different locations of the state and could be used as an opportunity to mentor people on proper martin care and maintenance, and experience.

### **Other Items:**

Greg will write an article on nest changes for the June 2021 newsletter, he will include an MSDS information sheet or link about the use of Sevin in the nest.

Les will provide a link in the June newsletter to a recent article that hints at the effects of light to early migration of Purple Martins and other species.

### **Eagle Scout Project:**

Les reported that the Eagle Scout project is continuing. There has been discussion between the scout candidate and the Parks Director in Appleton about continued care and observation once the house is setup. The parks director will solicit help from other civic groups and if they cannot find help, members of the parks will take on the responsibility. It is unclear at this time if the house will be ready for this spring.

Meeting concluded 3:30





## *Recruiting New Board of Directors:*

The WPMA is actively seeking to add 2 new members to the WPMA Board of Directors. If you are interested in applying for one of these positions send an email to Vice-President Greg Zimmermann. Include contact information, and provide a brief biography describing your experience, also provide a statement indicating why would like to serve, and what services or skills you can offer the organization. As stated in the Job Description and By-Laws newly elected Board Members serve a one year introductory term before being elected to a three year term. Elections of officers to take place at the September BOD meeting. Send your email applications to:

Greg Zimmermann

[grgz52@yahoo.com](mailto:grgz52@yahoo.com)

\*\*\*\*\*

*We would like to hear from you!* If you would like to share your purple martin story, we would like to include it in one of our newsletters. Please send it to me, Les Rhines, along with any photo's at [musthavemartins@gmail.com](mailto:musthavemartins@gmail.com)

\*\*\*\*\*

*We are looking for mentors!* We at the Wisconsin Purple Martins have had many requests for assistance from people who are interested in starting colonies. While we have a network of mentors already, we would like to add to our list. Typically, people need help with site location, types of housing to use, and attraction methods.

If you feel that you would like to become involved in our mentor program contact Les Rhines at [musthavemartins@gmail.com](mailto:musthavemartins@gmail.com)



# MartinFest 2021

**Marsh Haven Nature Center  
Waupun, Wisconsin  
Saturday, June 26 9AM-4PM**



## Location

**Marsh Haven N. C.  
W10145 State Road 49**



Located on 46 acres, three miles east of Waupun on the Northwest end of world famous Horicon Marsh.

## Food/ Refreshment

**Provided by Friends of  
Marsh Haven Nature Center**

Proceeds to benefit Nature Center & Purple Martin Colony

[www.marshhaven.org/](http://www.marshhaven.org/)

## Booths

Purple Martin housing (Bob Shimek)  
Sparrow Traps, Decoys, Aerial Insect  
& Food Flippers, Nesting Material,  
Martin Attractants, Starling Exclusion  
Entrances, etc.

(Wisconsin Purple Martin Association)  
[www.wisconsinpurplemartins.org](http://www.wisconsinpurplemartins.org)

**Free event is open to the public.**



Arrive to meet purple martin landlords & enthusiasts. Be inspired with the sights & sounds of a large colony of purple martins established in 1996-97. MartinFest will be centered around you, purple martins, Wildlife Disease Specialist Nancy Businga, President WPMA Les Rhines, & Master Bird Bander Dick Nikolai. Various vendors will be onsite throughout the day, a popular Festival silent auction & much discussion with colony landlords. Bring your whole family, friends & neighbors!

*Disclaimer: Event program may change due to weather, cancellations from speaker or harm to birds.*

9:00 AM	MartinFest 2021 Opens. Sign in & Browse
10:00-10:30 AM	Seminar: Purple Martin Ecology & Housing
10:45-11:15 AM	Seminar: Dealing with Weather, Nest Site Competitors & Predators
12:00-1:00 PM	Lunch. Browse Displays & View Martin Colony
1:00-2:00 PM	Purple Martin Health, Disease & You (WDNR Nancy Businga)
2:10-3:15 PM	Nest Record Needs for Monitoring, Banding Demonstration
3:25 PM	Silent Auction Closes
3:30 PM	Award Silent Auction Items (Cash or Check)
4:00 PM	Event Ends





**WPMA Officers and Board of Directors Contact Information:**

Les Rhines, President [musthavemartins@gmail.com](mailto:musthavemartins@gmail.com) (920) 889-0060

Greg Zimmermann, Vice President [grgz52@yahoo.com](mailto:grgz52@yahoo.com) (920) 467-6253

Deb Zimmermann, Treasurer [dpierce52@yahoo.com](mailto:dpierce52@yahoo.com) (920) 467-6253

Joe Francis, [jnfrancis44@gmail.com](mailto:jnfrancis44@gmail.com) (920) 918-4466

Larry Lienau, [larmon@tds.net](mailto:larmon@tds.net) (920) 565-2780

Dick Nikolai, [prairiechicken@att.net](mailto:prairiechicken@att.net) (920) 734-0828

Bob Ring, [ringbob@earthlink.net](mailto:ringbob@earthlink.net) (920) 9892771



## WPMA New Member Information Form

*Please Print Legibly*

**Name:** \_\_\_\_\_

**Address below:**

**Street:** \_\_\_\_\_

**City:** \_\_\_\_\_

**State:** \_\_\_\_\_ **Zip Code** \_\_\_\_\_

**Phone:** \_\_\_\_\_ (Home/Cell)

**Email Address:** \_\_\_\_\_

**Paid Date:** \_\_\_\_\_ **Received By:** \_\_\_\_\_

Cost of 1 year membership is \$10.00 (memberships run from January 1 to December 31)  
Payment by cash or check. Do not send cash in regular postal mail.

You will be contacted by someone from WPMA to complete your membership.

Send to WPMA Treasurer, N6018 Hwy 32, Sheboygan Falls, WI 53085